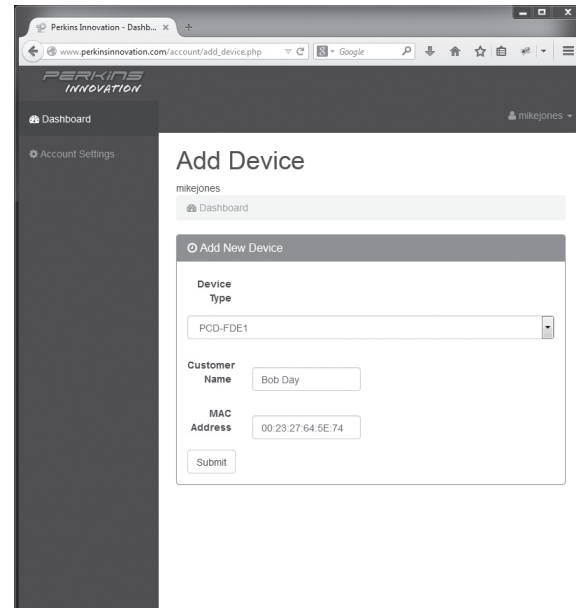
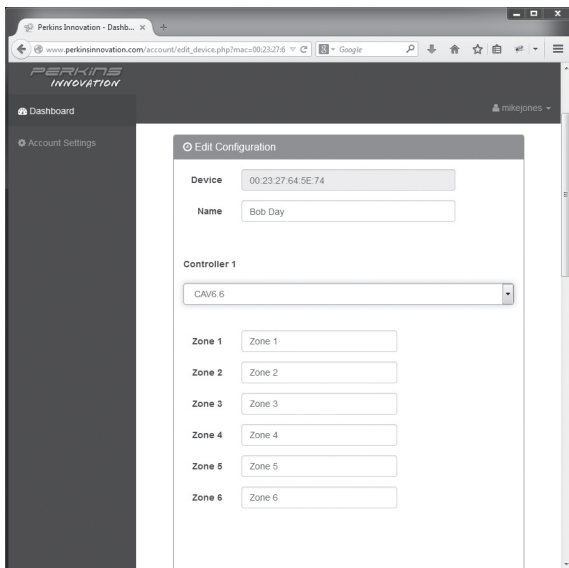


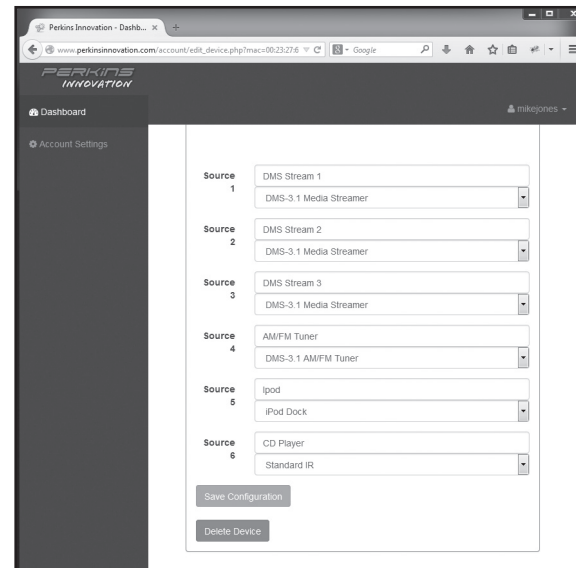
Select a device to edit or add new device here



Add new device Enters MAC Address and Customer name



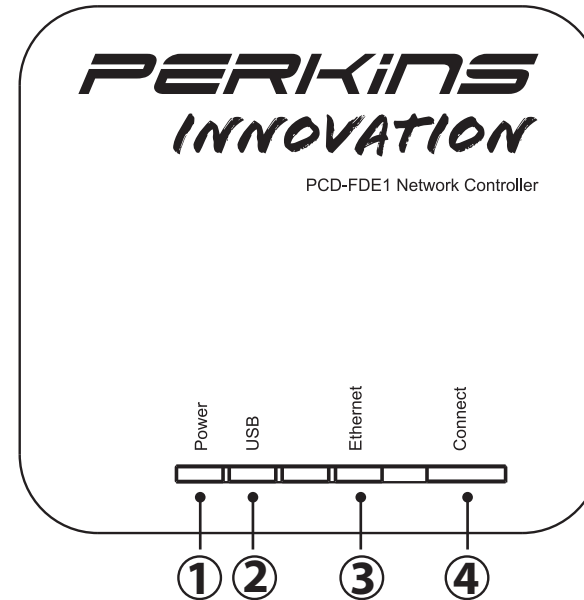
After you add new device and click submit, you will be taken to this screen to enter the device configuration, you will enter the controller type and zone names



After scrolling down, you will now have to enter the source names and source types. Click 'Save Configuration'

LED diagnostic:

- ① Power - On - normal operation
- ② Connect - On - normal operation
Connect - Flashing - Boot up / Config/ Upgrade
- ③ Ethernet - On / Flashing - Normal operation
Ethernet - Off - Problem with network connection
- ④ USB - Flashing - Normal operation
USB - Off - Problem with USB Adapter cable



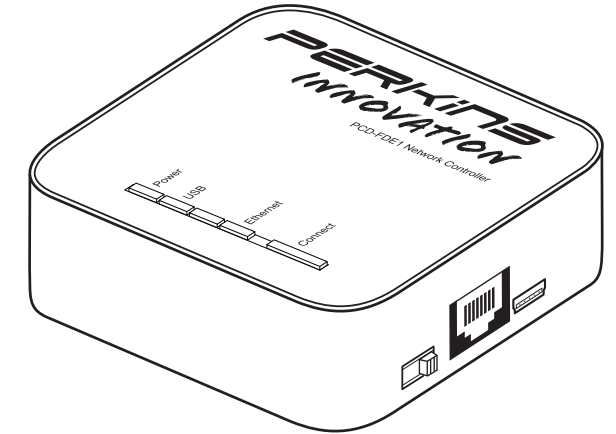
In the event that you can not connect to your PCD-FDE1, please check the following:

1. Make sure power is connected and the power LED is illuminated.
2. Check the Ethernet connection, make sure the RJ-45 connectors are firmly seated, and that the Ethernet LED is illuminated / flashing.
3. Check the USB and serial connectors, make sure all connections are tight, check to see that the USB LED is flashing. If connecting to a CAV6.6, make sure the RS232 switch is set to rear.

Perkins Software LLC.

www.perkinsinnovation.com

PERKINS INNOVATION



PCDE-FDE1 Network Controller Installation Manual

Product Overview

Perkins Innovation PCD-FDE1 provides direct access and remote control of a Russound multiroom audio system from an Apple iPhone, iPod touch, iPad, or Android based device. PCD-FDE1 allows for two-way remote control of any zone in a Russound RNET® enabled multiroom audio system and provides real time display of system and source information. The unit also provides full integration with the Russound DMS-3.1 Digital Media Streamer, and MyRussound App™ supporting cover art with real time meta-data display on older, non-RIO™ based Russound controllers.

The PCD-FDE1 consists of an interface device for integration between the local area network and the Russound multiroom audio system. Control is performed using the My Russound App™ which is available on Google Play as well as the App Store. Configuration is done via a cloud-based Web configuration tool, streamlining the setup process.

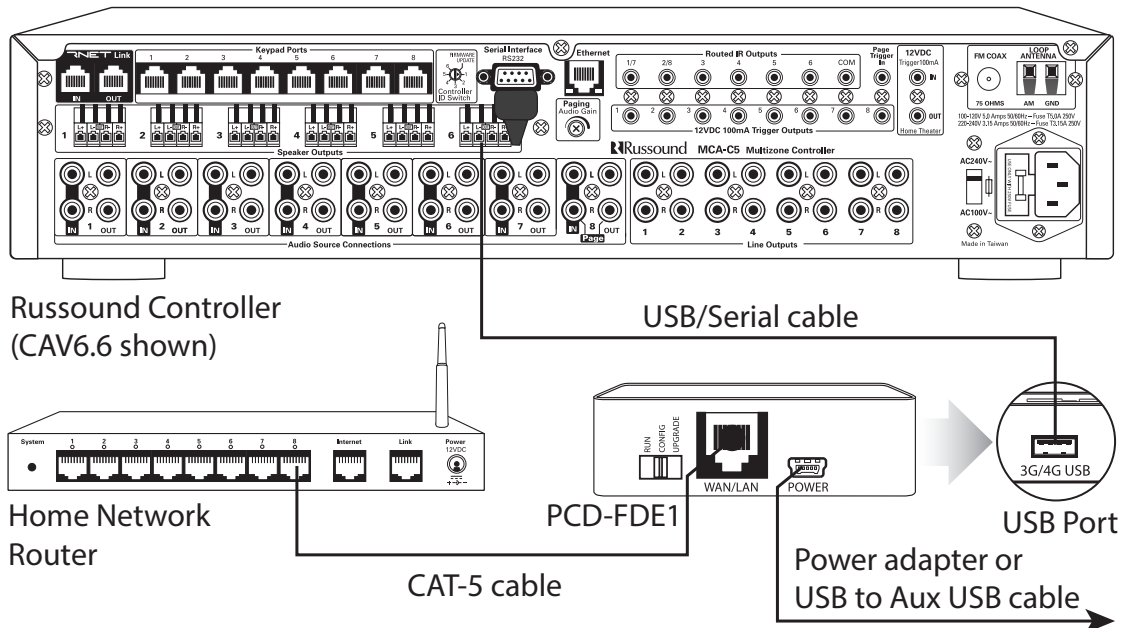
Setup on the PCD-FDE1 is easily accomplished via cloud based configuration utility. The configuration utility can be accessed via Apple iPhone, iPod touch, iPad, or Android based device. Any standard PC can also be used for this process. This tool is available 24 hours per day and may be accessed from any location. An Internet connection is required.

Features

- Compatible with the Apple iPhone, iPad, iPod Touch, and Android based devices
- Allows the Russound DMS-3.1 Digital Media Streamer and MyRussound App™ to be used with older Russound controllers
- Supports Russound ACA-E5, CAV6.6, CAM6.6, CAM6.6T, CAA66, and CA4 controllers
- Controls any zone and any source in the system including RNET and IR-controlled sources
- Multi-controller support - up to 6 controllers and 48 zones
- Displays real-time metadata from Russound RNET sources
- Ability to control zones for Bass, Treble, Loudness, Balance, DND, and Party Mode
- Zone volume control with mute option
- Displays zone and source names
- Easy to configure via PC or portable device – Set the Russound controller type; set the zone names, source names, and source types • 10/100 Ethernet connectivity to home network
- Can be powered directly from the Russound DMS-3.1
- Firmware upgradeable via a cloud based browser interface

What's in the box:

- (1) 4' CAT-5 network patch cable for connection from the PCD-FDE1 to the existing LAN
- (1) USB to RS232 serial adapter
- (1) Quick start guide
- (1) USB power supply cable
- (2) Velcro mounting strips



Basic installation

What you will need:

- Home network Wi-Fi router (**Note:** A wireless access point to the home network must be enabled in the setup process for proper use by iPhone or iPod Touch devices)
- RNET enabled controller
- PC with browser capability
- iPhone or iPod Touch

Perform following steps:

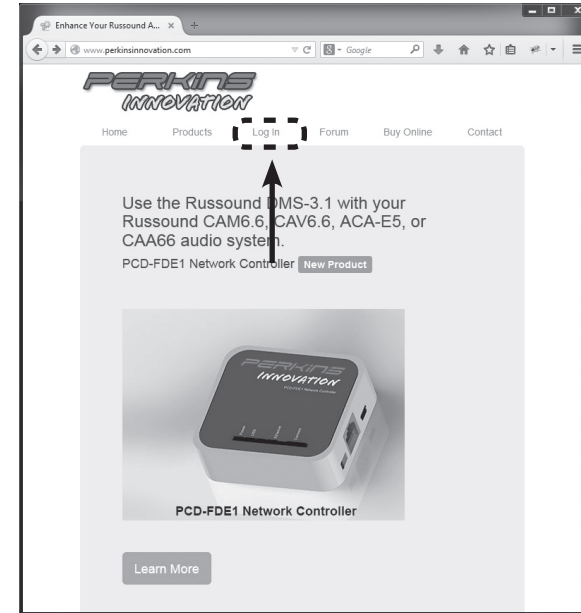
1. Connect the PCD-FDE1 to your home network router via a CAT-5 wired Ethernet (LAN) connection. The PCD-FDE1 must be on the same network as any Ethernet connections to RNET controllers or components.
2. Connect the supplied USB serial adapter to the USB port on the PCD-FDE1, to the RS232 port on the RNET controller (on ACA-E5 multiroom controller, use RS-232 port 'A'). If it is a multiple controller system, the PCD-FDE1-A must be connected to controller #1.

Note: On CAV6.6 be sure the RS232 switch is set to 'rear'

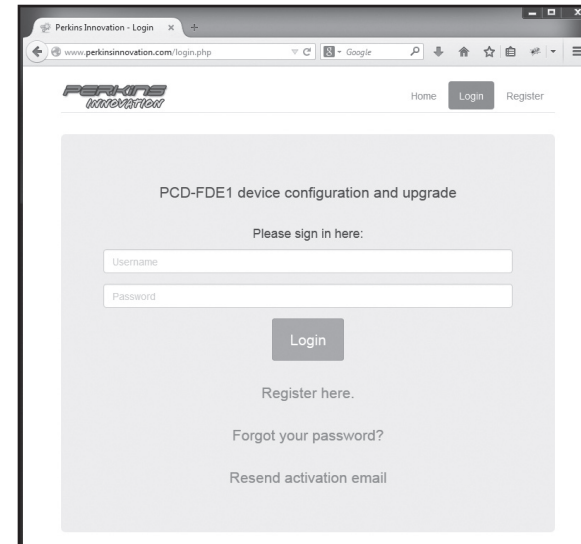
Configuration

Log on to the www.perkinsinnovation.com web site. Click on 'log in' at the top of the page. See the screen shot below. There is no network configuration for the user to perform. Simply plug the device into the Ethernet network, and it obtains an IP automatically via DHCP. The device will automatically find the DMS-3.1 and will connect to that as well.

Set up the device using the online Web page and save the configuration.

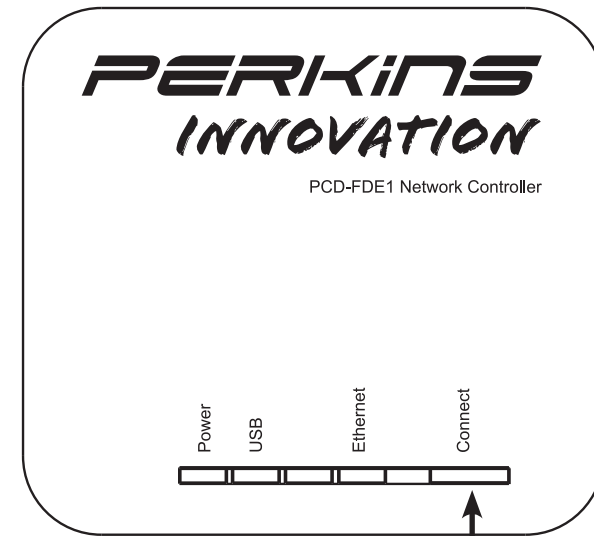


Login or Register Here



Perform following steps:

1. In order to configure the PCD-FDE1, slide the switch on the side to the middle position "Config".
2. Press and hold the top button (marked "Connect") until the switch stops illuminating. (The switch has a built-in LED) This may take up to 5 seconds. Once it turns off, release the button.



3. The unit will then automatically download its configuration and reboot. All LED's will go out and then flash on briefly. The switch on the top marked "Connect" will begin to flash, indicating that it's booting back up.
4. Once it's booted and the USB LED begins to flash, (indicating that the device is up and running) slide the side switch back to run.

Configuration complete.